

## Supporting Water Tanks

### Water tank support for standard Fink Trusses

Figure 68

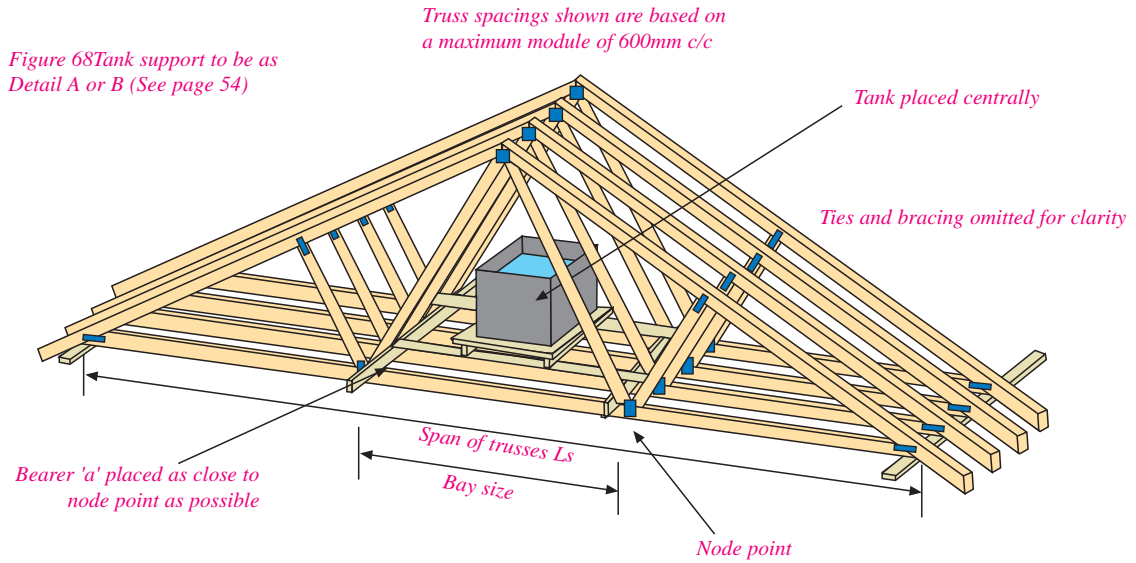
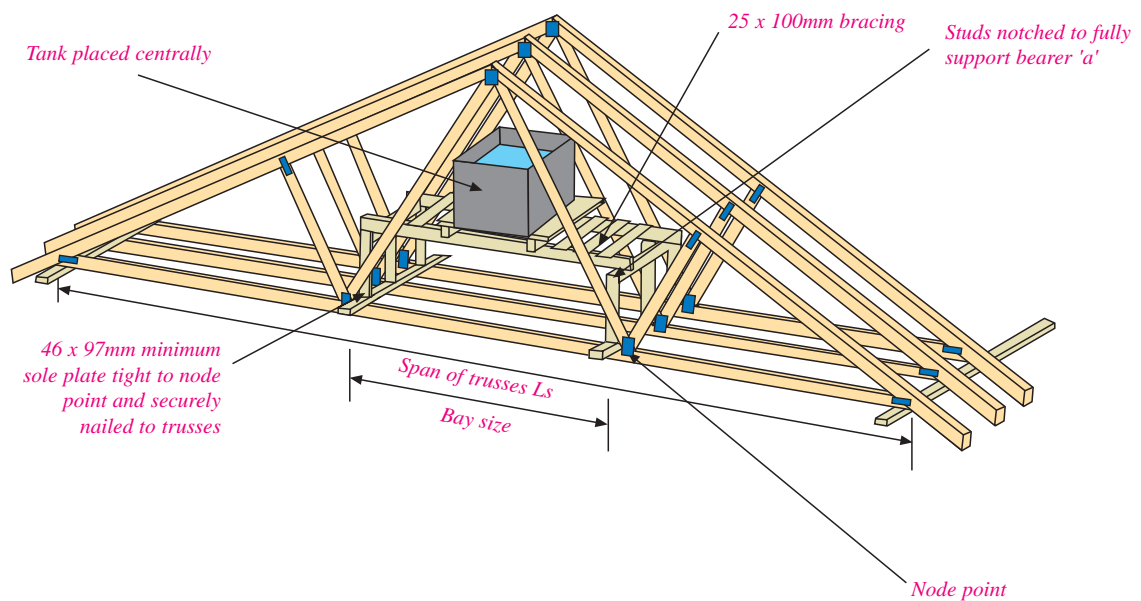


Figure 69

### Water tank support platform

Tank support to be as Detail A or B (See page 54)

Note: Always carefully brace elevated tank platforms back to main truss

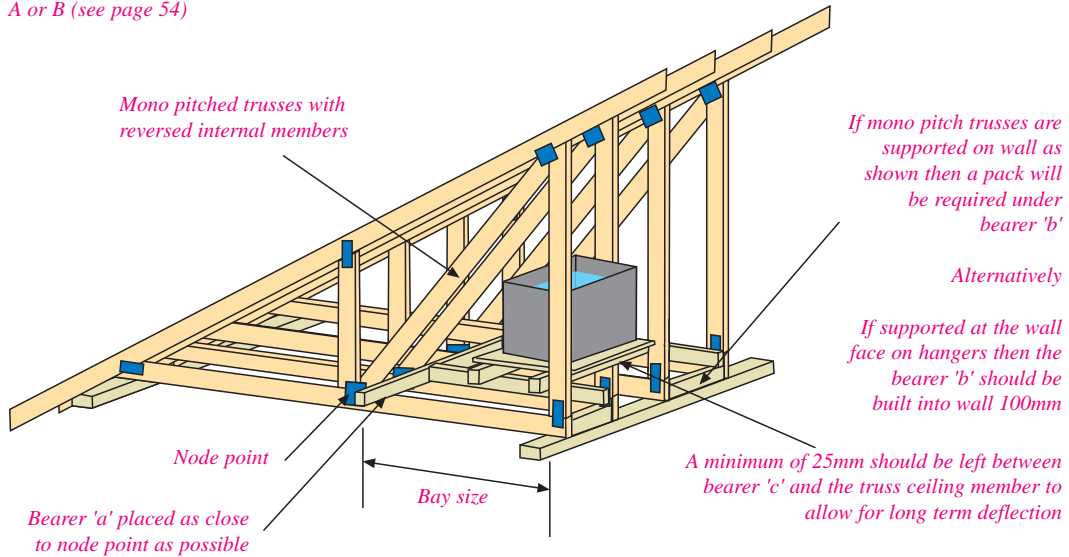


## Supporting Water Tanks

### Water tank support for Mono Pitch Trusses

Figure 70

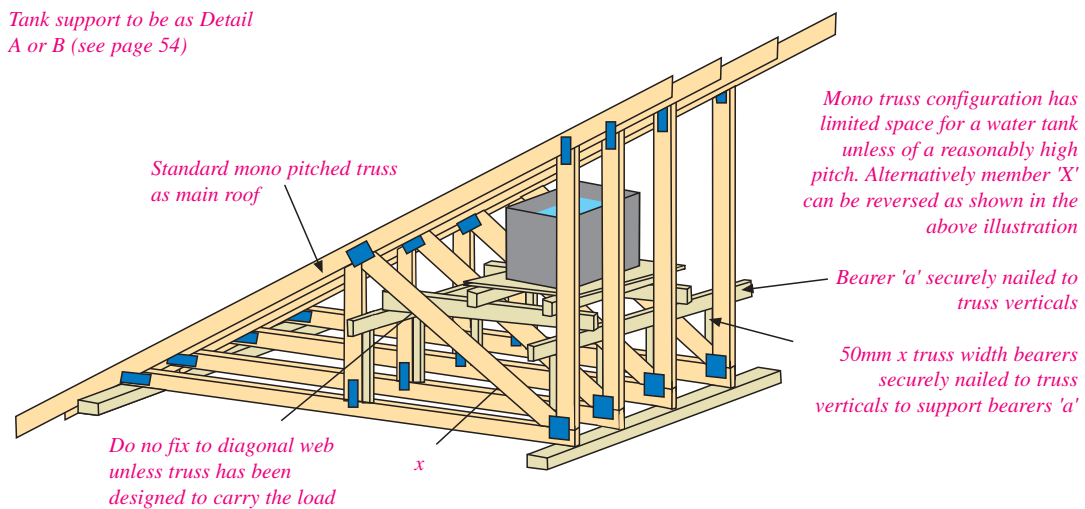
Tank support to be as Detail  
A or B (see page 54)



### Water tank support platform for Mono Pitch Trusses

Figure 71

Tank support to be as Detail  
A or B (see page 54)



### Supporting Water Tanks

#### Water tank support for Small Span Trusses

Figure 70

Tank support to be as Detail A or B (see page 54)

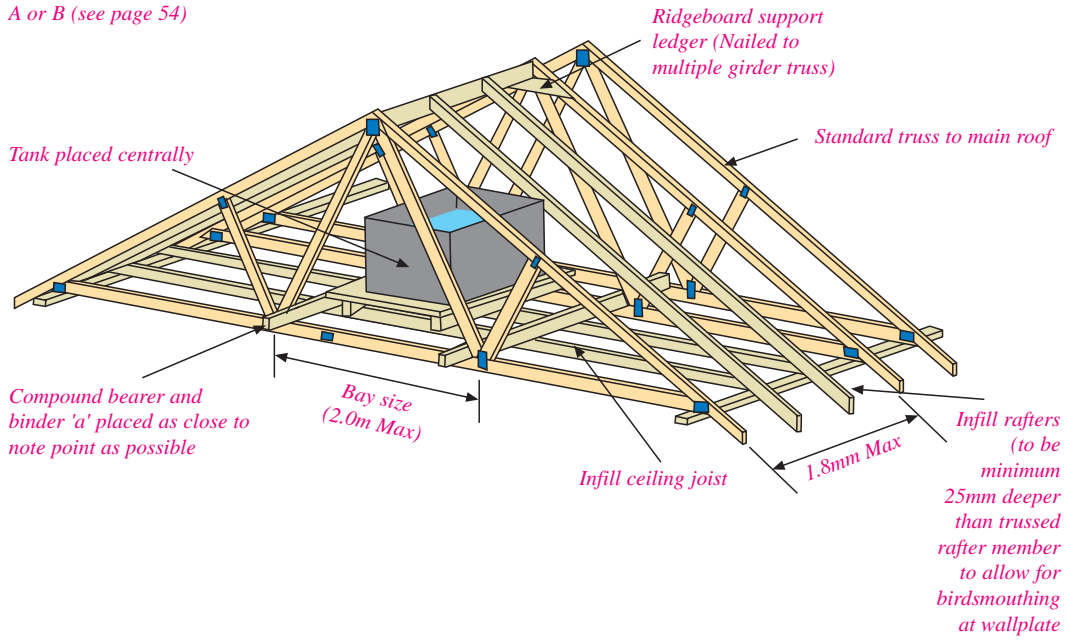
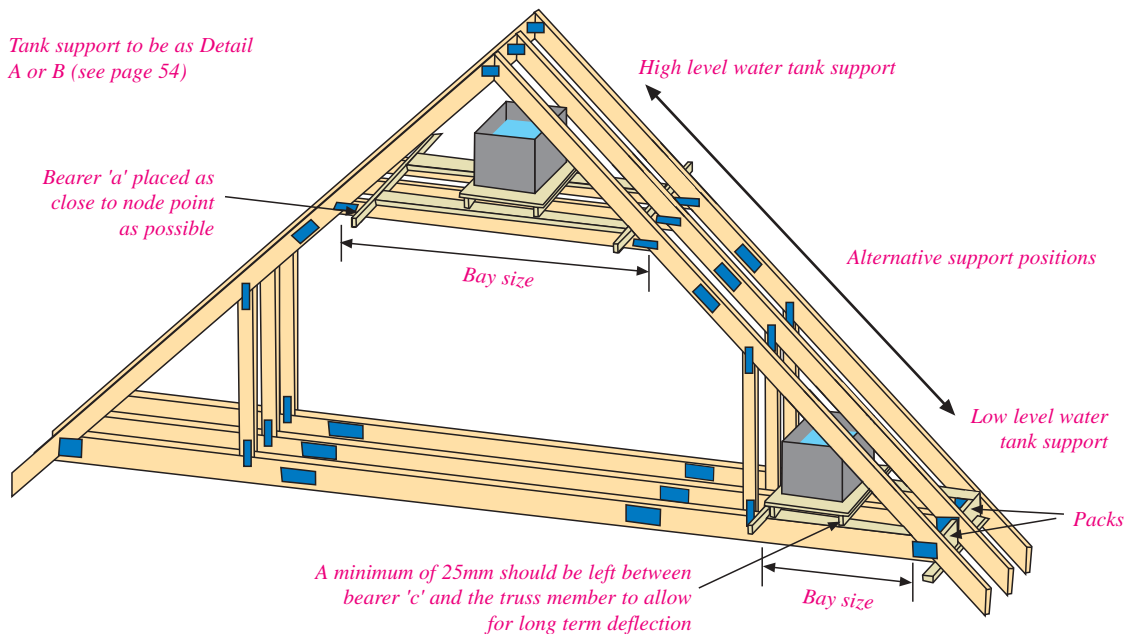


Figure 70

#### Water tank support for Open Plan Attic Trusses

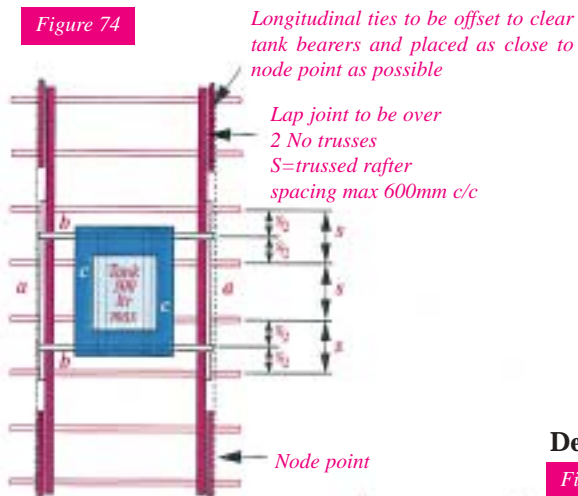
Tank support to be as Detail A or B (see page 54)



## Supporting Water Tanks

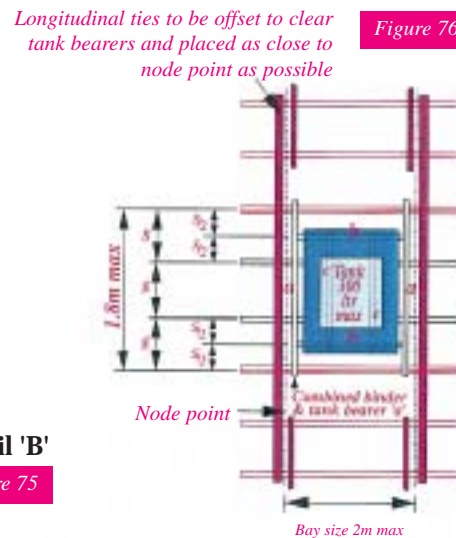
### Detail 'A'

Figure 74



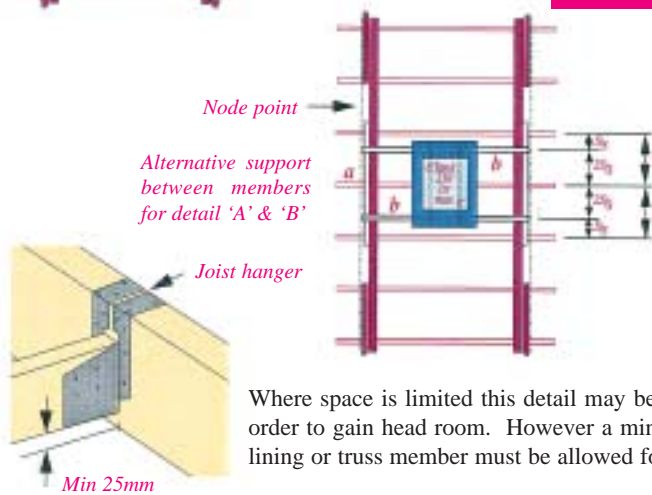
### Detail 'C'

Figure 76



### Detail 'B'

Figure 75



If water tanks are to be supported on the trussed rafters in accordance with the details shown then the provision for these must be taken into account at the design stage.

Otherwise, the additional loads imposed by the water tanks must be supported independent of the trussed rafters.

Where space is limited this detail may be used between members a & b and b & c in order to gain head room. However a minimum clearance of 25mm above the ceiling lining or truss member must be allowed for possible long term deflection.

Table 1: Sizes for support member

Tank capacity to marked water line	Minimum member size (mm)		Max span Ls for fink trussed rafters (m)	Max bay size for other configurations (m)
	a and c	b		
<b>Detail 'A'</b> not more than 300 litres on 4 trussed rafters	47 x 72	2/35 x 97 or 1/47 x 120	6.50	2.20
	47 x 72	2/35 x 120 or 1/47 x 145	9.00	2.80
	47 x 72	2/35 x 145	12.00	3.80
<b>Detail 'B'</b> not more than 230 litres on 3 trussed rafters	47 x 72	1/47 x 97	6.50	2.20
	47 x 72	2/35 x 97 or 1/47 x 120	9.00	2.80
	47 x 72	2/35 x 120 or 1/47 x 145	12.00	3.80
<b>Detail 'C'</b> not more than 300 litres on 2 multiple trusses as shown	1/72 x 145 or 2/35 x 145	1/72 x 145 or 2/35 x 145	6.00	2.00

Note: Support members may be of any species with a permissible bending stress not less than that of European redwood/whitewood of C16 strength class or better.